

Vail Incorporation Update

October 29, 2012





Vail, Arizona



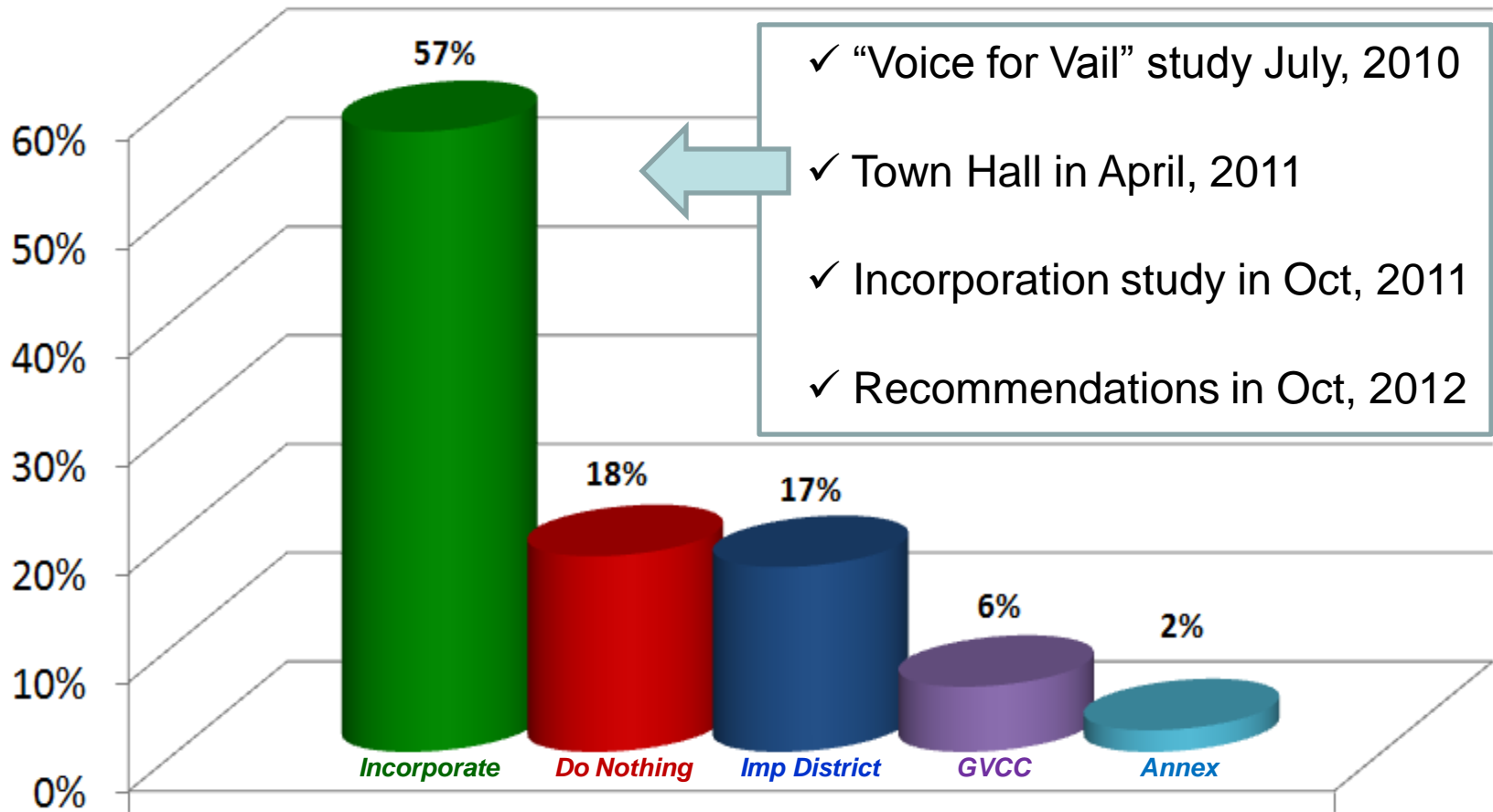
- Vail has been a community for over 100 years, dating back to 1880
- Since 2000, the population has grown by over 300%!
- Vail is a census-designated place with a population of 10,208. Vail is recognized regionally as a community and is served by an ever-expanding list of businesses, churches, and organizations
- The Vail School District is nationally recognized for excellence and draws people to Vail for their children's education
- Today Vail is at a crossroads, both geographically and as a community



Vail Town Hall Meeting Results

Vail Town Hall Meeting on April 20, 2011, results from registered participants from the Greater Vail area

(listed in order) **Incorporate** Do Nothing Imp District GVCC Annex



#1 Preference

Why Incorporate?

Why do communities incorporate?

- Improved Public Safety (police)
- Improved Infrastructure (roads)
- Other benefits like libraries and parks
- Greater local/regional influence

Arizona population living in incorporated areas: **83%**

- Maricopa County → **93%** → (\$898M)
- Pima County → **64%** → (\$182M)

State revenues shared with cities in FY 2012-2013: **\$1.4B**
split between the 91 municipalities

- Basic services in incorporated areas form the essential foundation for economic success



Vision Quest Project

Findings & Recommendations

Incorporation Process

Qualifications

Population Requirements
Town > 1,500
City > 3,000

Community
Urban in nature
Common interests

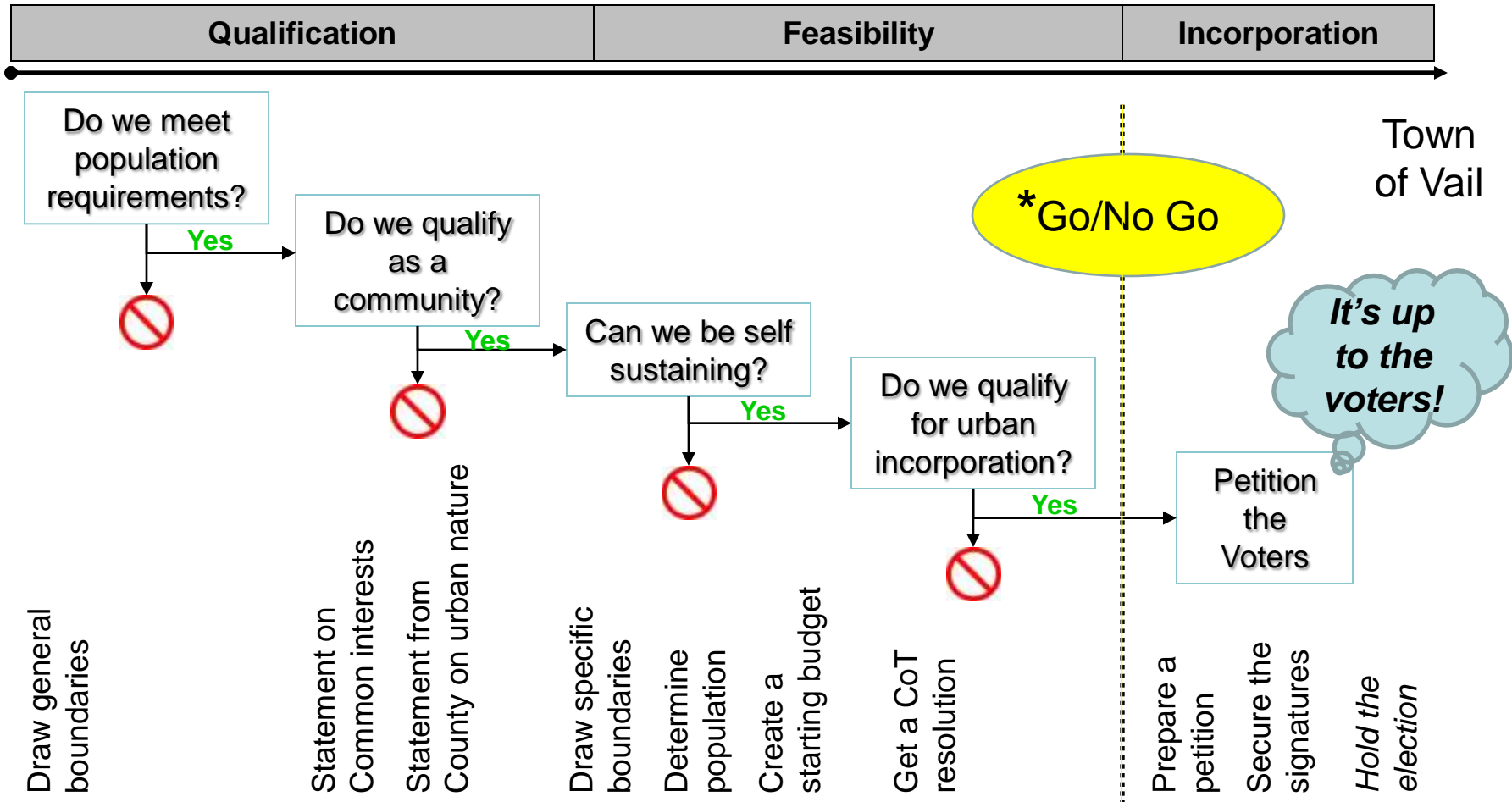
Model
Revenues
Expenses

Proximity
6 mile rule or
Antenori statutes

Petitions
Without election
With election

Process

Deliverables



Town of Vail

*Go/No Go

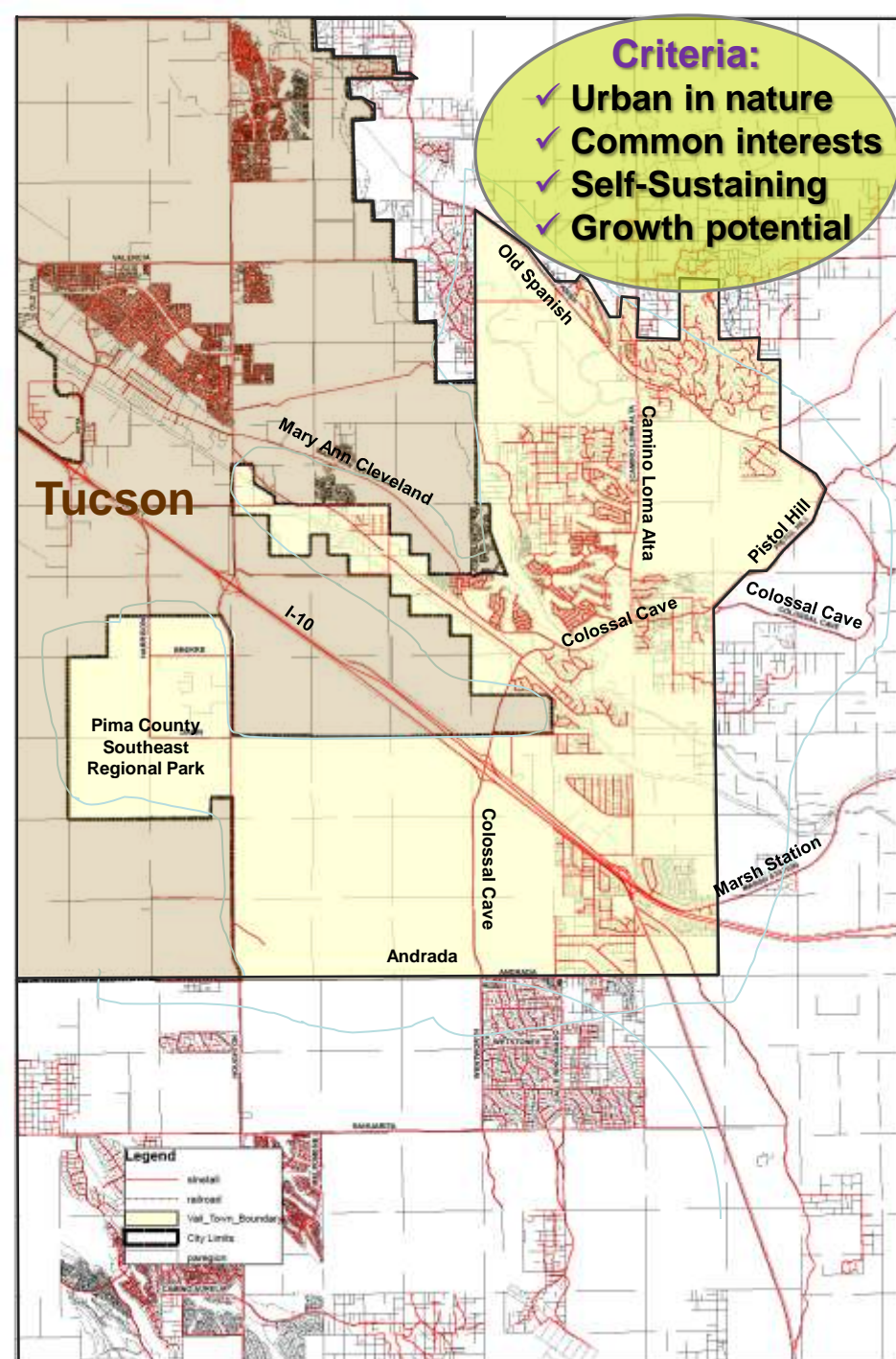
It's up to the voters!

Experts Consulted

- Tom Belshe, Deputy Director, League of Arizona Cities & Towns
- Tom Benavidez, Municipal Attorney
- Ray Carroll, Pima County Supervisor, and assistant Jennifer Wong
- Arlen Colton, Pima County Planning Director
- David Cummings, Director, Pima County Transportation Department
- Captain Byron Gwaltney, Pima County Sheriff's Department
- Chuck Huckelberry, Pima County Administrator, and assistant Nicole Fyffe
- Ann Rodriguez, Pima County Recorder
- Jonathan Rothschild, Mayor of Tucson
- Shirley Scott, Tucson City Council
- Jim Stahle, Town Manger of Sahuarita (and other town officers)
- Bill Staples, Pima County Assessor
- Volunteers from our community on the Vision Quest Committee

Town of Vail Proposed Boundary

- Northern Boundary
 - Old Spanish Trail plus Academy Village and Coyote Creek
- Western Boundary
 - Follows City of Tucson boundary (brown area)
- Eastern Boundary
 - Section lines and Pistol Hill
- Southern Boundary
 - Andrada Road



Proposed Town of Vail

- Encompasses 43 square miles
 - (Pima County is 9,187 Sq Mi)
- 11,500 residents in proposed boundary
- Vail would be 40th largest town out of the current 91 towns/cities in Arizona
- It would be similar sized to Cottonwood and Coolidge
- It would be Arizona's newest town:
 - Town of Vail (2013?)
 - Tusayan (2010)
 - Star Valley (2005)
 - Maricopa (2003)



State Taxes

- We Already Pay State:
 - *Income tax*
 - *Sales tax*
 - *Gasoline tax*
 - *Vehicle registration fees*



- State divides tax revenues up among the various local governments within the state:

- *cities, towns, counties*

- Vail is not a city, town or county so we get nothing

Donor Community

Our Share



- If incorporated, we receive: (estimated)
 - \$1.17M annually from the state income tax
 - \$ 959K annually from state sales tax
 - \$ 688K annually from state gas tax
 - \$ 428K annually from state vehicle registration
- Totals over \$3.2M back to our community
 - All from taxes we already pay!
- Who better to decide how to spend it...

A town council elected by us?

... or

A government somewhere else?

What to do with the Money!

- ✓ Improve our roads
- ✓ Increase police presence
- ✓ Build parks for our children
- ✓ Influence a library for our community
- ✓ Preserve our past and our values
- ✓ Encourage retail development
- ✓ Etc.....

Improve our Roads

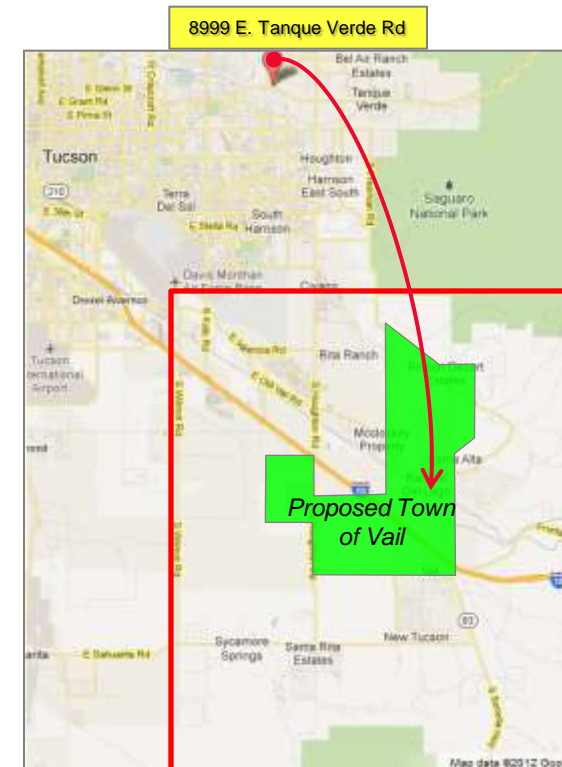
- Pima County spent **\$243,000** on our roads last year
- Taxes we already pay today would provide **\$688,000** for us to spend on our roads
- Pima County is responsible for maintaining 2,068 miles of roads
- The Town of Vail would have 65 Miles of Town maintained roads



Increase our Safety



- # of police callouts continues to increase each year
- A permanent presence is needed in our community—the closest county sheriff substation is over 20 miles (~30+) minutes away (Bear Canyon)
- Vail deserves better








Take Control of our Future



Today, Pima County approves all building and development plans for Vail:

- We can influence how our town grows and develops (existing land use is grandfathered)
- We can have more control to preserve our past and those qualities of Vail that matter to us

What Else?

- Vail School District continues, as is 
- Fire protection continues, as is 
- Water service continues, as is 
- Trash and sewer service remain unchanged 
- No property tax increase 

Estimated Vail Budget Summary

| | | |
|---------------------------|--------------------|--------------------|
| • *Revenue: | | |
| – Arizona Revenue Sharing | \$3,245,000 | \$3,245,000 |
| • Expenses: | | |
| – Contracted Services | \$2,603,000 | |
| – Other Costs | 295,000 | |
| – Administration | 138,000 | |
| – Capital Investments | 104,000 | |
| | \$3,140,000 | \$3,140,000 |
| • Surplus: | | \$ 105,000 |

*Other revenue sources include development impact fees, sales tax

Summary

Vail incorporation is desirable and financially feasible in a tax neutral scenario with:

1. Improved roads
2. Improved police services
3. Local decision making (keep Vail special)
4. The captured State revenue dollars
currently leaving Vail

Incorporate—Let's Do it!



- Proposal:
 - Form the Vail Incorporation Committee
 - Take the proposal to the community
 - Solidify support among neighboring partners
 - Gather Petitions
 - Hold Election in August 2013
- This is a citizen driven initiative—will you help?
 - Volunteer your time: We need neighborhood ambassadors
 - Donate money

What will Vail be in 30-years?

...The time to decide is now

